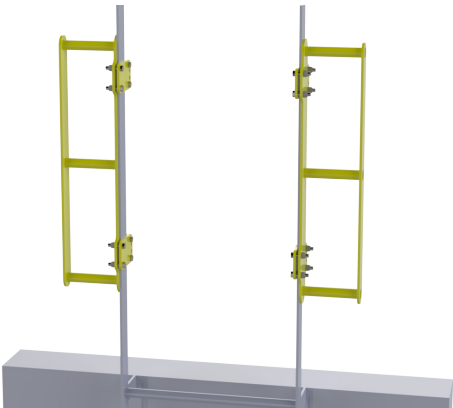




Installation Instructions/Operation and Maintenance Manual

Under License Agreement from Ellis Ladder Improvements
Patents 6,095,283; 6,347,685; 6,619,428



- Models:
- GBS-CLMP (Clamp-on)
 - GBS-WELD (Weld-on)

Table of Contents:

Safety Precautions	2
Product Information	2
Operation	3
GBS-CLMP Installation	4
GBS-WELD Installation.....	5
Inspection and Maintenance.....	6
Warranty Certificate	8

Contact Information

Mail	Local Phone	Website	Hours of Operation
PS Safety Access 1150 South 48th Street Grand Forks, ND 58201	701.746.4519	pssafetyaccess.com	8 A.M. to 5 P.M. CT Monday – Friday
	Toll Free Phone	Email	
	877.446.1519	4psinfo@psindustries.com	

IMPORTANT! Read entire Instruction and Operations Manual to become familiar with the product.

NOTICE This product is a fall protection product. The effectiveness of the product is directly related to the proper installation and operation of this product. Failure to properly maintain this product **will** affect performance.

Publication Notice

This manual has been compiled and published covering the latest product descriptions and specifications.

The contents of this manual and the specifications of this product are subject to change without notice.

PS Safety Access reserves the right to make changes without notice in the specifications and materials contained herein and shall not be responsible for any damages (including consequential) caused by reliance on the materials presented, including but not limited to typographical and other errors relating to the publication.

PS Safety Access and/or its respective suppliers may make improvements and/or changes in the product(s)/ service(s) offered and/or the program(s) at any time without notice.

Retain this manual for future reference.

If you would like to download a copy of this manual, please go to pssafetyaccess.com



Safety Precautions

The following icons are used throughout this Manual.

- ▲ DANGER** Indicates an imminently hazardous situation which, if not avoided, will result in death or serious injury.
- ▲ WARNING** Indicates a potentially hazardous situation which, if not avoided, could result in death or serious injury.
- ▲ CAUTION** Indicates a potentially hazardous situation which, if not avoided, may result in minor or moderated injury.
- NOTICE** Indicates manufacturer's statement of additional information.
- IMPORTANT!** Indicates a required action.
- CRITICAL** Indicates a vital component to product performance.

GrabSafe® Product Information

NOTICE Unauthorized modification of or to the product voids this Limited Warranty. Authorized modifications, received in writing from PS INDUSTRIES INCORPORATED, as long as the modification is accomplished in strict accordance with PS INDUSTRIES INCORPORATED's instructions, does not void warranty. To request product modifications contact PS INDUSTRIES INCORPORATED, 1150 S. 48th Street, Grand Forks, ND 58201, phone 877-446-1519, email: 4psinfo@psindustries.com

I. General Information

- A. This manual contains information regarding installation, operation, and maintenance of the PS INDUSTRIES INCORPORATED's GrabSafe®.
- B. The GrabSafe® is designed meet OSHA Railing Standard 1910.29(b).
- C. PS INDUSTRIES INCORPORATED recommends that the owner implement a regular maintenance program to inspect the GrabSafe® as necessary.
- D. Operation in a manner other than intended could result in damage or less than acceptable performance at time of need, for which the manufacturer will not be held responsible.

II. Storage Prior to Installation of Product

- A. Store materials in a dry, ventilated location. If outdoor storage is required, block materials and tarp in a tent-like arrangement, elevated above the product with open sides to allow airflow.

III. Installation Site Preparation

NOTICE Before starting site preparation and installation of the GrabSafe®, read the entire Operation and Maintenance Manual and review all installation instructions thoroughly.

- A. Clear work area of any debris.
- B. Ensure you have the necessary tools available.

IV. Pre-Installation Safety Precautions

- A. Ensure opening is clear of all obstructions through the entire proposed travel of the GrabSafe® during operation.
- B. Comply with all OSHA and ANSI Safety Regulations and/or company safety policies when installing.
- C. Personnel: Determine the appropriate number of personnel required to perform installation and have them readily available at the project site. (1-2 people recommended)

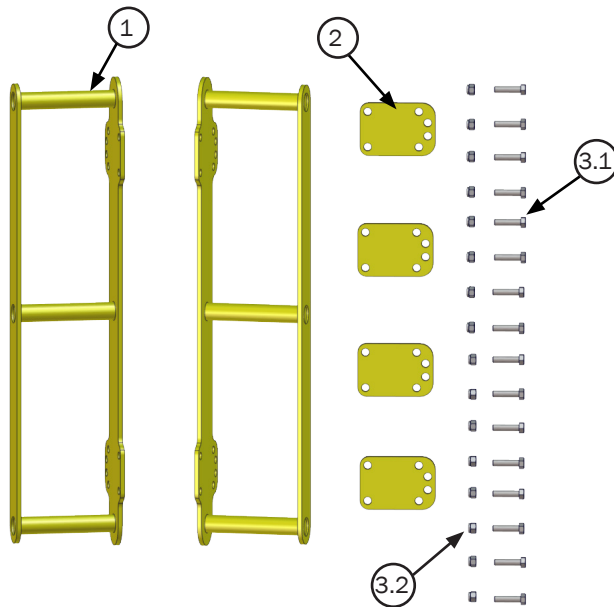
▲ DANGER Ensure area below installation is blocked off from personnel during installation, and mounting surface is capable of supporting all loading. Structural analysis of mounting surface is the responsibility of the owner.

GrabSafe® Product Information

NOTE: Inventory carton to ensure all parts are present for assembly/installation. Refer to part list below.

▲ WARNING Use 3/8" Diameter Grade 5 ZN or better bolts only. (GR8ZN Supplied)

GBS-CLMP (Clamp-On)			
ITEM #	PART #	DESCRIPTION	QTY
1	500728	GBS;ASSY BOLT ON RUNG	2
2	502116	GBS;LADDER PLATE BACK	4
3	511075	GBS;HARDWARE BAG-MS	1
3.1	500393	BOLT;HEX3/8"16X1 1/2GR8ZN	16
3.2	501118	NUT;NYLOCK 3/8"16 GR8ZN	16



Recommended Tools:

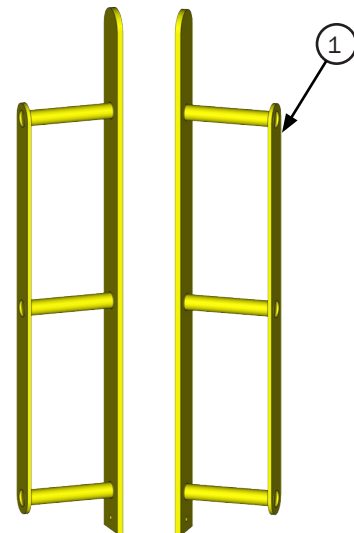
1. One (1) 9/16" Wrench
2. One (1) Socket and Ratchet
(Or additional 9/16" Wrench)
3. One (1) Tape Measure
4. One (1) Vise-Grip or Clamp

GBS FINISH OPTIONS	
*PCY	Powder Coat Safety Yellow
SS	Stainless Steel
GAL	Hot Dipped Galvanized

*Stocked option, SS & GAL available with longer lead times.

**TO ORDER PARTS CONTACT PS SAFETY ACCESS AT
877.446.1519 or 4psinfo@psindustries.com**

GBS-WELD (Weld-On)			
ITEM #	PART #	DESCRIPTION	QTY
1	500731	GBS;ASSY WELD ON RUNG	2



Recommended Tools:

1. One (1) Vise-Grip or Clamp

V. Operation

A. When ascending a ladder/entering the elevated platform:

1. When you have reached the top of the ladder, use GrabSafe® to stabilize yourself and continue climbing the ladder.

B. When descending a ladder/exiting the elevated platform.

1. Use GrabSafe®'s horizontal bars to stabilize yourself as you step down onto the existing ladder. Once you reach the existing ladder rungs, continue to descend the ladder.
3. Always maintain a firm grip on the railing or ladder.

▲ WARNING Do not use GrabSafe® as a step.

Installation of GBS-CLMP

VI. Installation of GBS-CLMP

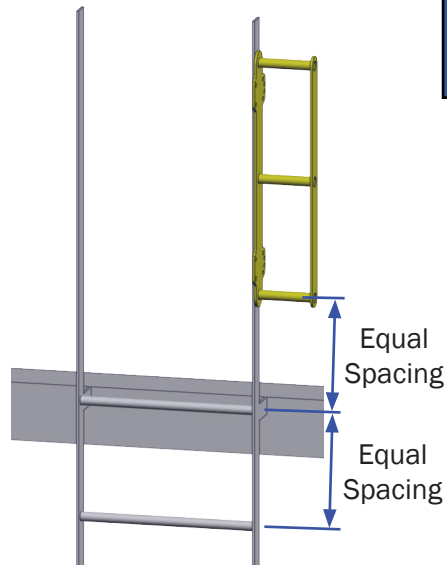
(GrabSafe® installation using high-strength bolts.)

STEP 1.

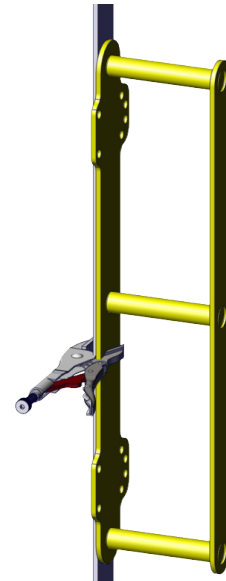
- Measure the vertical spacing of the existing ladder rungs.
- Position the GrabSafe® on the ladder side rail on the side opposite of the existing ladder rungs. Maintain the same vertical spacing as the ladder rungs which you just measured.

STEP 2. Use a Vise-Grip or clamp to temporarily hold the GrabSafe® to the existing ladder while installing.

**Step 1
Illustration**



**Step 2
Illustration**



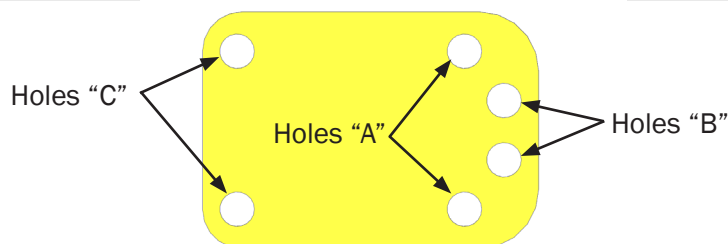
STEP 3.

- Insert $\frac{3}{8}$ " bolts and $\frac{3}{8}$ " nylock nuts; loosely tighten into holes "C". (Illustration A)
- Insert $\frac{3}{8}$ " bolts and $\frac{3}{8}$ " nylock nuts; loosely tighten in holes "A" or "B". (Illustration A)
- Evenly tighten bolts and nylock nuts.

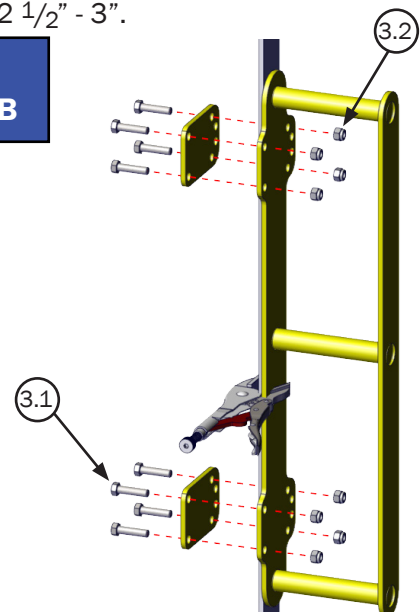
IMPORTANT! Self-locking nuts must be tight.

NOTICE Holes "A" are for side rails up to 2 $\frac{1}{2}$ "; Holes "B" are for side rails 2 $\frac{1}{2}$ " - 3".

**Step 3
Illustration A**



**Step 3
Illustration B**



STEP 4. Repeat Steps 1-3 for the opposite GrabSafe® assembly.

STEP 5. Test GrabSafe® for proper installation and rigidity.

CRITICAL VERIFY INSTALLATION

- Ensure all bolts/nuts are tight.

Installation of GBS-WELD

VII. Installation of GBS-WELD

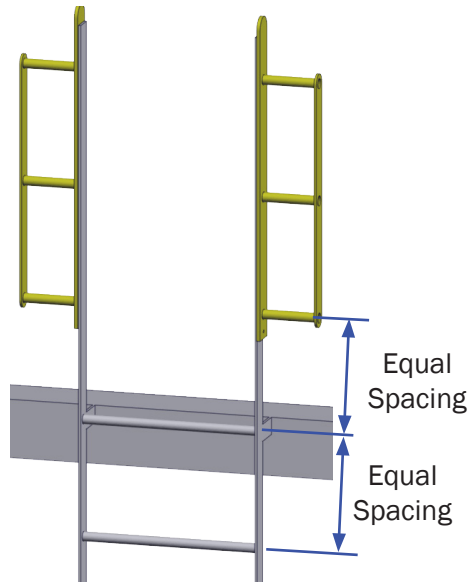
(GrabSafe® installation with field weld.)

STEP 1.

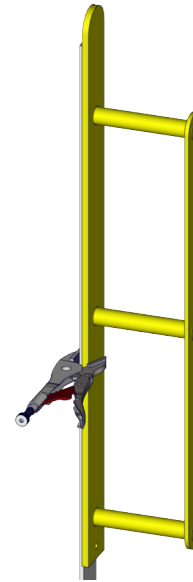
- Measure the vertical spacing of the existing ladder rungs.
- Position the GrabSafe® on the ladder side rail on the side opposite of the existing ladder rungs. Maintain the same vertical spacing as the ladder rungs which you just measured.

STEP 2. Use a Vise-Grip or clamp to temporarily hold the GrabSafe® to the existing ladder while installing.

**Step 1
Illustration**



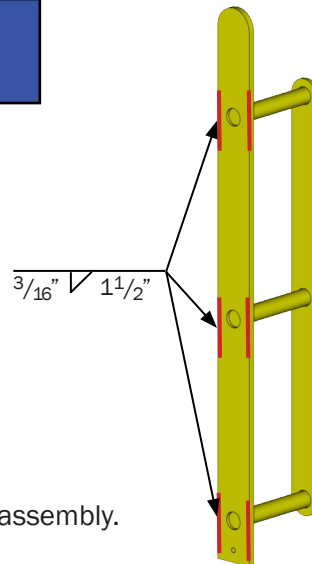
**Step 2
Illustration**



STEP 3.

- Field-weld to existing ladder.
PS Safety Access recommends a $\frac{3}{16}$ " weld at $1\frac{1}{2}$ " long on marked locations.

**Step 3
Illustration**



STEP 4. Repeat Steps 1-3 for the opposite GrabSafe® assembly.

STEP 5. Test GrabSafe® for proper installation and rigidity.

CRITICAL VERIFY INSTALLATION

- Make sure bars are parallel to each other.

Inspection and Maintenance

VIII. Inspection and Maintenance (Minimum Annually)

IMPORTANT! Consult parts list before replacing fasteners, as all have specific design load requirements. Only use like items for replacement.

A. GrabSafe®:

1. Inspect components for damage and misalignment. Adjust, repair, or replace as needed, to meet original design tolerance.
2. Check for proper alignment with existing ladder rungs. Adjust as necessary to achieve proper alignment.

B. Fasteners and mechanical connections

1. All fasteners must be in place and adjusted to their original design standard. Replace any damaged components.
2. Check all mounting connections, making sure they meet original design standards (refer to instructions).

C. Finishes

1. Inspect and clean finishes periodically.
2. Touch up repair finishes, or refinish as necessary to protect the structural integrity of the GrabSafe®.
3. The PCY GrabSafe® comes with a polyester powder coat finish. Use finish materials compatible with powder coat. Follow paint manufacturers' instructions for prep and touch-up.

D. Housekeeping

1. To ensure your product continues to operate and last, upon completion of proper installation, complete the following:
 - a. Clean all surfaces.
 - b. If project is ongoing, protect installed products until final completion of project.
 - c. Touch-up, repair, or replace damaged components.
2. Ensure the horizontal bars are clear of debris and interferences.

E. Labels and Placards:

1. Inspect all labels and placards.
2. Replace any labels and placards which are unreadable/missing.

Inspection and Maintenance Log **CRITICAL** Periodic Inspection and Maintenance Required. Inspect at minimum annually.

Date Purchased: _____
Product: GrabSafe®
Model Number: GBS-
Serial Number: _____

Opening Identifier/ Number: _____
Location: _____

DATE INSPECTED	INSPECTED BY <i>(Print & Sign)</i>	INSPECTION ITEMS NOTED	CORRECTIVE ACTION	CORRECTED BY <i>(Print & Sign)</i>

PS INDUSTRIES INCORPORATED – LIMITED WARRANTY

Limited Warranty: Subject to the terms of this Limited Warranty, PS INDUSTRIES INCORPORATED warrants to the original user or consumer (the "Owner") of a PS INDUSTRIES INCORPORATED product (the "Product") that, for a period of one (1) year from date of shipment, the Product will be free from defects in material and workmanship under normal use and service, and provided the Product is installed, operated and maintained in accordance with instructions supplied by PS INDUSTRIES INCORPORATED. The terms and limitations of this Limited Warranty apply to all repaired or replacement Products for a term equal to the balance of the warranty remaining on the Product that was repaired or replaced as of the date of such repair or replacement.

PS Flood Barriers™ Product Warranty Registration: For PS Flood Barriers™ Products, this Limited Warranty will only be valid if the Owner completes the Warranty Registration Form provided within thirty (30) days of Product installation. To request a copy of the Warranty Registration Form, contact PS INDUSTRIES INCORPORATED, 1150 S. 48th Street, Grand Forks, ND 58201, phone 877-446-1519, email: 4psinfo@psindustries.com. Additional Warranty Registration Forms can be downloaded at www.psfloodbarriers.com/download-center/

Warranty Exclusions: Notwithstanding anything to the contrary, this Limited Warranty does not cover any of the following:

1. Normal wear and tear (including, but not limited to, normal wear and tear to gaskets and weather seals); damage or accidents resulting from freight damage, from failure to follow precautionary safety measures, or applied paint failure; abuse, misuse or unauthorized modification of the Product; misapplication; improper installation; or any defects, damage or other harm that is not the result of the acts or omissions of PS INDUSTRIES INCORPORATED.
2. Cost of field labor or other charges incurred by Owner in removing and/or re-affixing the Product or any part or component thereof.
3. Transportation costs.

Unauthorized modification of or to the Product voids this Limited Warranty. Authorized modifications, received in writing from PS INDUSTRIES INCORPORATED, as long as the modification is accomplished in strict accordance with PS INDUSTRIES INCORPORATED's instructions, does not void warranty. To request product modifications contact PS INDUSTRIES INCORPORATED, 1150 S. 48th Street, Grand Forks, ND 58201, phone 877-446-1519, email: 4psinfo@psindustries.com.

Claim Procedure: To make a claim under this Limited Warranty, the claim must be received by PS INDUSTRIES INCORPORATED before the expiration of the above stated Limited Warranty period together with proof of purchase. Contact PS INDUSTRIES INCORPORATED at the address shown below.

PS INDUSTRIES INCORPORATED	Toll Free: 877-446-1519
Attention: Warranty	Phone: 701-746-4519
1150 S. 48th Street	Fax: 701-746-8340
Grand Forks, ND 58201	E-mail: 4psinfo@psindustries.com

An authorized PS INDUSTRIES INCORPORATED representative must be given a reasonable opportunity to inspect and investigate the alleged Product defect prior to any work being done that affects the Product or its installation. PS INDUSTRIES INCORPORATED reserves the right to charge reasonable amounts for travel and labor associated with investigation of claims. PS INDUSTRIES INCORPORATED may also require photographs of the alleged Product defect or return of the Product or part to a designated PS INDUSTRIES INCORPORATED location, freight prepaid. A return goods authorization must be received prior to the return of the Product or part. Please contact PS INDUSTRIES INCORPORATED to determine the designated location for return and to obtain the return material authorization.

Exclusive Remedy: In the event of a warranty claim that PS INDUSTRIES INCORPORATED determines to be covered by this Limited Warranty, PS INDUSTRIES INCORPORATED will replace or repair, at PS INDUSTRIES INCORPORATED's discretion, the Product or any part of the Product found to be defective.

Disclaimers: The above warranty and remedy is the sole express warranty and remedy given by PS INDUSTRIES INCORPORATED on its Product. No warranties or representations at any time made by any representative from PS INDUSTRIES INCORPORATED shall vary or expand the provisions hereof. TO THE EXTENT PERMITTED BY LAW, ALL EXPRESS AND IMPLIED WARRANTIES (INCLUDING IMPLIED WARRANTIES OF MERCHANTABILITY, FITNESS FOR A PARTICULAR PURPOSE AND NON-INFRINGEMENT) OTHER THAN THE EXPRESS LIMITED WARRANTY SET FORTH ABOVE ARE EXPRESSLY DISCLAIMED. UPON THE EXPIRATION OF THE ABOVE STATED LIMITED WARRANTY PERIOD, ANY AND ALL APPLICABLE IMPLIED WARRANTIES, INCLUDING, WITHOUT LIMITATION, WARRANTIES OF MERCHANTABILITY, FITNESS FOR A PARTICULAR PURPOSE AND NON-INFRINGEMENT, ARE DISCLAIMED. SOME STATES DO NOT ALLOW LIMITATION ON HOW LONG AN IMPLIED WARRANTY LASTS, SO THE ABOVE LIMITATION MAY NOT APPLY TO OWNER.

LIABILITY LIMITATION: In no event will PS INDUSTRIES INCORPORATED's liability to Owner or any other person or entity exceed the price paid to PS INDUSTRIES INCORPORATED for the defective Product. IN NO EVENT SHALL PS INDUSTRIES INCORPORATED BE LIABLE TO OWNER OR ANY OTHER PERSON OR ENTITY FOR INCIDENTAL, CONSEQUENTIAL, INDIRECT OR SPECIAL DAMAGES OF ANY DESCRIPTION, WHETHER ARISING OUT OF WARRANTY (INCLUDING ANY IMPLIED WARRANTIES) OR ANY OTHER CONTRACT, STRICT LIABILITY, NEGLIGENCE OR OTHER TORT, OR OTHERWISE, INCLUDING ARISING FROM INSPECTION OR REMEDY DELAYS. SOME STATES DO NOT ALLOW THE EXCLUSION OR LIMITATION OF INCIDENTAL OR CONSEQUENTIAL DAMAGES, SO THE ABOVE LIMITATION AND EXCLUSION MAY NOT APPLY TO OWNER.

THIS WARRANTY GIVES OWNER SPECIFIC LEGAL RIGHTS AND OWNER MAY ALSO HAVE OTHER RIGHTS, WHICH VARY FROM STATE TO STATE.