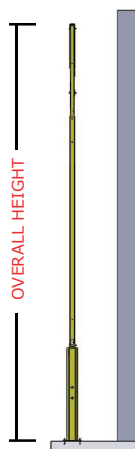
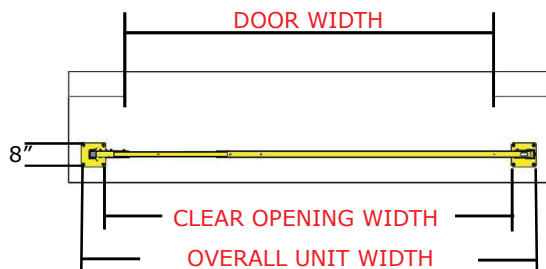


LOADING DOCK SAFETY GATE

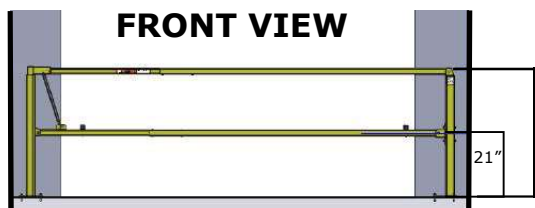
SIDE VIEW



OVERHEAD VIEW



FRONT VIEW

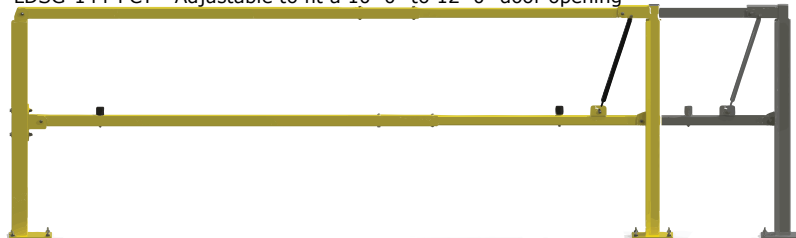


TYPICAL CONFIGURATIONS

MODEL	DOOR WIDTH	OVERALL HEIGHT	CLEAR OPENING WIDTH	OVERALL WIDTH
LDSG-120-PCY	96"	154.25"	108"	132"
LDSG-120-PCY	120"	178.25"	132"	148"
LDSG-144-PCY	120"	178.25"	132"	148"
LDSG-144-PCY	144"	202.25"	156"	172"

FLEXIBLE SIZING:

LDSG-120-PCY - Adjustable to fit an 8'-0" to 10'-0" door opening
LDSG-144-PCY - Adjustable to fit a 10'-0" to 12'-0" door opening



INSTALLATION:

Assembly required. After gate is fully assembled, product simply bolts to existing floor or concrete.

MATERIAL:

- Gate Rails: 1-3/4" square, mild steel tube, minimum 14-gauge, factory welded.
- Gate Post: 3" square, mild steel tube, minimum 14-gauge, factory welded.
- Gate Catch: 10-gauge formed mild steel, factory welded.
- Fasteners: zinc plated.
- Anchors: 3/8" expansion-type concrete anchors for installation into a minimum of 3000 PSI concrete.

FINISH:

Finish on all exposed, non-prefinished components to be powder coat safety yellow.

PERFORMANCE RATING:

Gate shall meet or exceed OSHA requirements at the time of manufacture relative to dimensions and loading. One-year warranty from date of shipment, excluding finishes.