

Self-Closing



Personnel Fall Protection

PALLET RACK SAFETY GATE

SELF-CLOSING FOR ULTIMATE PERSONNEL PROTECTION

The Pallet Rack Safety Gate is a self-closing, dual-gate system designed to fit existing rack systems. After palletized material is forklifted through the gate opening, the spring-loaded system self-closes along the mezzanine edge, protecting personnel from dangerous falls. This gate system is ideal for elevated pick modules with pallet flow systems, elevated working platforms and mezzanines.

EASY TO OPERATE

- Dual-gate system is always in place, allowing one-way pallet flow while protecting employees from the mezzanine edge
- Gate self-closes by spring-loaded hinge
- Available in standard sizes to fit 60-inch-wide and 96-inch-wide openings (custom sizing available)

IMPROVES SAFETY

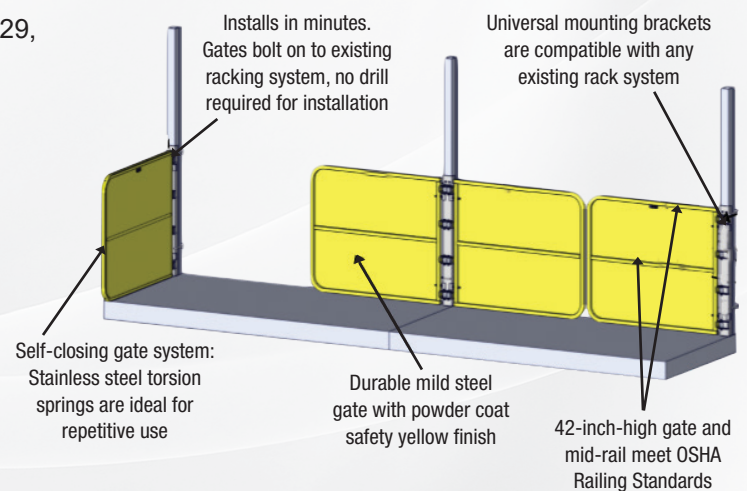
- Complies with OSHA Railing Standard 1910.28 and 1910.29, including a 42-inch-high gate and mid-rail
- Protects personnel on elevated working platforms from accidental falls

QUICK INSTALLATION

- Universal mounting brackets are compatible with any existing rack system and install in just minutes
- No drilling required – gates bolt on to racking system

LONG-LASTING AND ECONOMICAL

- Durable mild steel gate construction with powder coat safety yellow finish
- Stainless steel torsion springs are ideal for repetitive use
- Requires little or no maintenance
- Economical cost



701.746.4519 | 877.446.1519 | www.psdors.com | 4psinfo@psdoors.com

7045
6 PCS
PS QUALIFIER SOLID MATTE BLACK XL
1003401058

STANDARD TECHNICAL DATA

MATERIAL:

- Standard Dimensions: 60" or 96" opening width.
- Gate: Formed 1-1/4" square, 11-gauge steel tubing. 18-gauge mild steel sheeting factory welded in place. Includes two (2) 3/8" stop bolts, zinc-plated.
- Hinge Post: 10-gauge mild steel.
- Torsion Springs: 17-7 stainless steel torsion springs ensure safe and consistent operation. Includes eight (8) torsion springs per gate system.
- Gate Operation: Allows for 90° travel.

HARDWARE:

- Standard mounting hardware includes zinc-plated U-bolts, washers and nuts.

FINISH:

- Finish on all exposed surfaces to be powder coat safety yellow.

PERFORMANCE RATING:

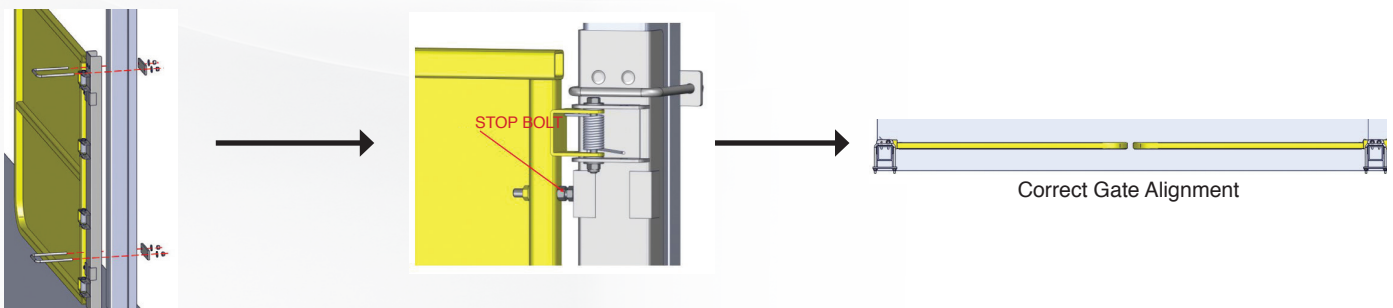
- Gate shall meet or exceed OSHA railing requirement 1910.28 and 1910.29, relative to guarding openings, at the time of manufacture.

INSTALLATION:

1: Attach mounting bracket to existing racking system at desired height. Secure gate to rack post using U-bolts.

2: Adjust stop bolts for proper gate alignment.

3: Repeat steps 1 and 2 for additional gates.



MEASURING GUIDE:

Model Number	Clear Opening (A)	Opening Width (B)	Gate Width (C)	Gate Height (D)
PRG-60	58-1/4"	60"	30"	42"
PRG-96	94-1/4"	96"	48"	42"

*Multi-bay configurations utilize shared mounting bracket.

